



THE LARGEST EUROPEAN
INLAND WATERWAYS NETWORK

SEINE-SCHELD T NETWORK : PROGRESS TO DATE AND FUTURE PROSPECTS

GILLES RYCKEBUSCH
MANAGER OF THE EEIG SEINE-SCHELD T
TERRITORIAL DIRECTOR OF VNF NORD PAS-DE-CALAIS

JÉRÔME DEZOBRY
CHAIRMAN OF THE EXECUTIVE BOARD
SOCIÉTÉ DU CANAL SEINE-NORD EUROPE (SCSNE)

**FOURTH MEETING - NORTH SEA-RHINE-MEDITERRANEAN CORRIDOR FORUM,
BRUSSELS – 22ND JUNE 2026**



Co-funded by
the European Union



SUMMARY

SEINE-SCHELDTS AT A GLANCE

1. A network that continues to grow
2. A network addressing cross-border issues
3. A remarkable network in environmental terms
4. A network supporting actors and local territories

FOCUS ON CANAL SEINE NORD EUROPE CONSTRUCTION,
The main project of Seine-Scheldt

A NETWORK THAT CONTINUES TO GROW



Construction work on the new lock of Obourg (Wallonia)



Construction work on the Ingelmunster bridge (Flanders)



View of the elongated Quesnoy-sur-Deûle lock December 2025



Inauguration of the Poses dam (Seine aval) June 2026



Construction work on the Montmacq lock (CSNE) April 2026



Earthworks of the Oisy-le-Verger lock (CSNE) June 2026

ÉTAT D'AVANCEMENT DES OPÉRATIONS SUR LE RÉSEAU SEINE-ESCAUT
DÉCEMBRE 2025
VOORTGANG VAN DE WERKZAAMHEDEN AAN HET SEINE-SCHELDE NETWERK
DECEMBER 2025



Canal Seine-Nord Europe
 Compiègne / Aubencheu-au-Bac

LIÈGE
 L: 143
 H: 11,40
 P: 3,90
 2 Vb

LYS EN FLANDRE
 L: 119
 H: 11,40
 P: 2,40
 2 Vb

LYS MÉDIÉVINE
 L: 165
 H: 9,90
 P: 2,90
 2 Vb

DEÛLE
 L: 145
 H: 11,40
 P: 3,90
 2 Vb

CONDÉ-PECO
 L: 110
 H: 11,40
 P: 3,90
 2 Vb

SENFÈTE / BRUXELLES
 L: 111
 H: 4,50
 P: 2,90
 2 Vb

LIÈGE
 L: 145
 H: 11,40
 P: 3,90
 2 Vb

LYS MÉDIÉVINE
 L: 165
 H: 9,90
 P: 2,90
 2 Vb

DEÛLE
 L: 145
 H: 11,40
 P: 3,90
 2 Vb

CONDÉ-PECO
 L: 110
 H: 11,40
 P: 3,90
 2 Vb

SENFÈTE / BRUXELLES
 L: 111
 H: 4,50
 P: 2,90
 2 Vb

LIÈGE
 L: 145
 H: 11,40
 P: 3,90
 2 Vb

LYS MÉDIÉVINE
 L: 165
 H: 9,90
 P: 2,90
 2 Vb

DEÛLE
 L: 145
 H: 11,40
 P: 3,90
 2 Vb

CONDÉ-PECO
 L: 110
 H: 11,40
 P: 3,90
 2 Vb

SENFÈTE / BRUXELLES
 L: 111
 H: 4,50
 P: 2,90
 2 Vb

LIÈGE
 L: 145
 H: 11,40
 P: 3,90
 2 Vb

LYS MÉDIÉVINE
 L: 165
 H: 9,90
 P: 2,90
 2 Vb

DEÛLE
 L: 145
 H: 11,40
 P: 3,90
 2 Vb

CONDÉ-PECO
 L: 110
 H: 11,40
 P: 3,90
 2 Vb

SENFÈTE / BRUXELLES
 L: 111
 H: 4,50
 P: 2,90
 2 Vb

LÉGENDE Legenda

- CONFORME À LA DÉCISION D'EXÉCUTION DE L'UNION EUROPÉENNE**
In overeenstemming met het Europees uitvoeringsbesluit
- TRAVAUX EN COURS AVEC NIVEAU DE SERVICE DÉJÀ AMÉLIORÉ**
Werk in uitvoering met verbeterde infrastructuur (A) in gebruik
- OUVRAGE EN SERVICE**
Balans op de infrastructuur in gebruik
- TRAVAUX EN COURS**
Werk in uitvoering
- TRAVAUX PRÉPARATOIRES EN COURS**
Voorbereidend werk in uitvoering
- ÉTUDES EN COURS**
Lopende onderzoeken
- HORS RÉSEAU SEINE-ESCAUT**
Buiten het Seine-Scheldt netwerk
- FRONTIÈRE**
Landsgrens
- LIMITE DE RÉGION**
Regionale grens
- LE HAVRE**
Grote zeehavens en Europese hubs
- PLATEFORME MULTIMODALE (EXISTANTE)**
M, multimodale overslagterminal (bestaand)
- PLATEFORME MULTIMODALE (EN PROJET)**
M, multimodale overslagterminal (gepland)

ÉCHELLE Schaal
 0 50 100 km

Cette carte synthétique a été élaborée à partir de cartes fournies par Velux Navigables de France et avec le concours de la Vlaamse Waterweg nv, de la FOSBE et de Service public de Wallonie (Département Intercommunautaire de Région Transfrontalière Canal-Besart). Gewaarborgd beschikbaar op het laatste moment door Velux Navigables de France. In samenwerking met de Vlaamse Waterweg, FOSBE en de Service public de Wallonie (Intercommunautair departement - regionaal grensoverschrijdend Canal-Besart).

DIMENSIONS EN MÈTRE (CANTON / AFMETING)	COEFFICIENTS DE CONTENANCE MAX			CLASSE CEMT	TONNAGE
	MAX: 1	MAX: 2	MAX: 3		
L: 100 H: 11,90 P: 3,20	1	2	3	I	650 - 1000
L: 120 H: 9,90 P: 3,40	1	2	3	II	1000 - 1500
L: 150 H: 9,40 P: 2,80	1	2	3	Vb	1000 - 1500
L: 180 H: 11,90 P: 3,20	1	2	3	Vb	3200 - 6000



[WWW.SEINE-SCHELDT.EU](http://www.seine-scheldt.eu)

A NETWORK ADDRESSING CROSS-BORDER ISSUES

Traffic: a reality that is set to grow

→ Today: more than 1/3 of the freight transported on the Canal du Nord are cross-border (France-Belgium-Netherlands)

→ Tomorrow: 2/3 of the freight transported on the future Seine-Nord Europe Canal (SCSNE) will be cross-border



Comines Lock

Decarbonisation – alternatives fuels



The first self-propelled vessel powered by hydrogen ZULU 06

dec 2024 – Funding PAMI and Horizon Europe

Joint operations (Lys, Condé)



Recalibration works on the shared Lys river



Reopening of the cross-border Condé-Pommeroeul Canal

A NETWORK SUPPORTING ACTORS AND LOCAL TERRITORIES

A driver of innovation



Hasselt remote control center (Flanders)

A strong case for modal shift



Modernisation of the secondary lock La Cave (Seine)
(2023 – crédits : @JVNF)



Construction works on the new Sint-Baafs-Vijve lock
(2023 – crédits : @DVW)

A cultural, industrial and urban heritage that is being showcased, and revitalised towns



Nevele bridge inauguration (Flanders)



Ronquières inclined water plane
(Wallonia)



Development work on the Nimy Blaton canal
(Wallonia)



A REMARKABLE NETWORK IN ENVIRONMENTAL TERMS



Environmental compensation zones around the Condé-Pommeroeul Canal
(end 2023– Crédits : @VNF Ph.Houze)



Landscaping of the riverbanks along Section 140 of the river Lys
(Crédits : @DVW)



Measures to protect beavers along the Condé-Pommeroeul Canal
(2023– Crédits : @VNF)



Vue d'ensemble du Pont-Canal de la Somme © Canalieau / Lavigne Chéron architectes

Somme canal-bridge project
(2026 - Crédits : Canalieau/Lavigne Chéron architectes)

A CLOSER LOOK ON THE SEINE-NORD EUROPE CANAL - CONSTRUCTION



THE LARGEST EUROPEAN INLAND WATERWAYS NETWORK

COMMISSION IMPLEMENTING DECISION (EU) 2019/1118
of 27 June 2019
on the Seine – Scheldt cross-border project on the North Sea – Mediterranean and Atlantic Core Network Corridors



4 Project promoters



01/07/2026



SOCIÉTÉ DU CANAL SEINE-NORD EUROPE



Gauge: 4400
tonne/barges
(200 lorries)

Length: 107km
6 locks
62 bridges
1200ha
environnemental
areas



Co-funded by the European Union

A CLOSER LOOK ON THE SEINE-NORD EUROPE CANAL CONSTRUCTION SITE

250 HECTARES OF ENVIRONMENTAL DEVELOPMENT COMPLETED OR IN PROGRESS



Continuous
independant
evaluation



A CLOSER LOOK ON THE SEINE-NORD EUROPE CANAL CONSTRUCTION SITE

SOUTH PART



FIRST BRIDGES DELIVERED IN 2025



FIRST LOCK — CONSTRUCTION ON PROGRESS



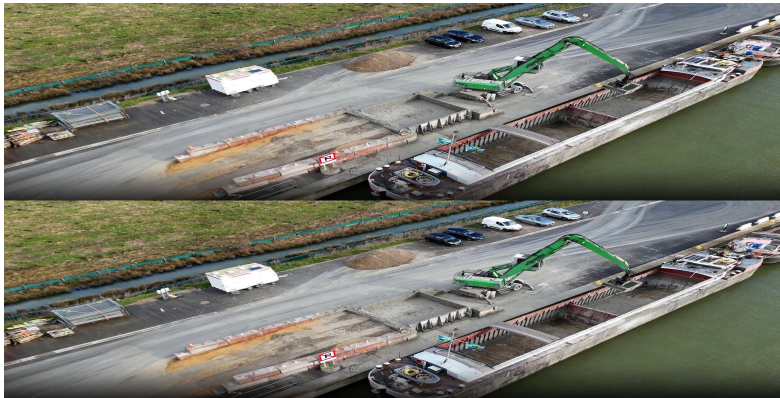
01/07/2026



A CLOSER LOOK ON THE SEINE-NORD EUROPE CANAL CONSTRUCTION SITE

NORTHERN PART

CONSTRUCTION OF INLAND WATERWAY
QUAYS TO DECARBONISE THE
CONSTRUCTION SITE



DEVIATION OF GAS
NETWORK



BRIDGE CONSTRUCTION ON A2
MOTORWAY PARIS/BRUSSELS

A CLOSER LOOK ON THE SEINE-NORD EUROPE CANAL CONSTRUCTION SITE

800 WORKERS ALREADY INVOLVED ON PROJECT



AN IMPORTANT STEP FORWARD :

GROUND BREAKING CEREMONY FOR THE LAUNCH OF EARTHWORKS OISY-LE-VERGER LOCK

→ A cross-border event with the Walloon and Flemish partners, European Commission, and European Investment Bank





**seine
SCHELDT**

THE LARGEST EUROPEAN
INLAND WATERWAYS NETWORK



Co-funded by
the European Union